

Level Up

CONSPIRACY THEORIES





Do you know what conspiracy theories are...?

Do you have any examples?





**DID WALT DISNEY ORDER HIS
BODY TO BE FROZEN AFTER
HIS DEATH...?**

Was Walt Disney frozen after death?

26 April 2019

Share Save



The strange myth of Walt Disney's frozen head

In the latest episode of Debunked, Nicholas Barber looks into the persistent myth that the man behind Mickey Mouse was cryogenically preserved.

Have you heard the rumour that following his death, Walt Disney was



ICON

STYLE · CURRENT EVENTS · CULTURE · EAT, DRINK, SLEEP · WELLBEING · WATCHES · MOTOR · BUSINESS AND FUTURE · ICON DESIGN

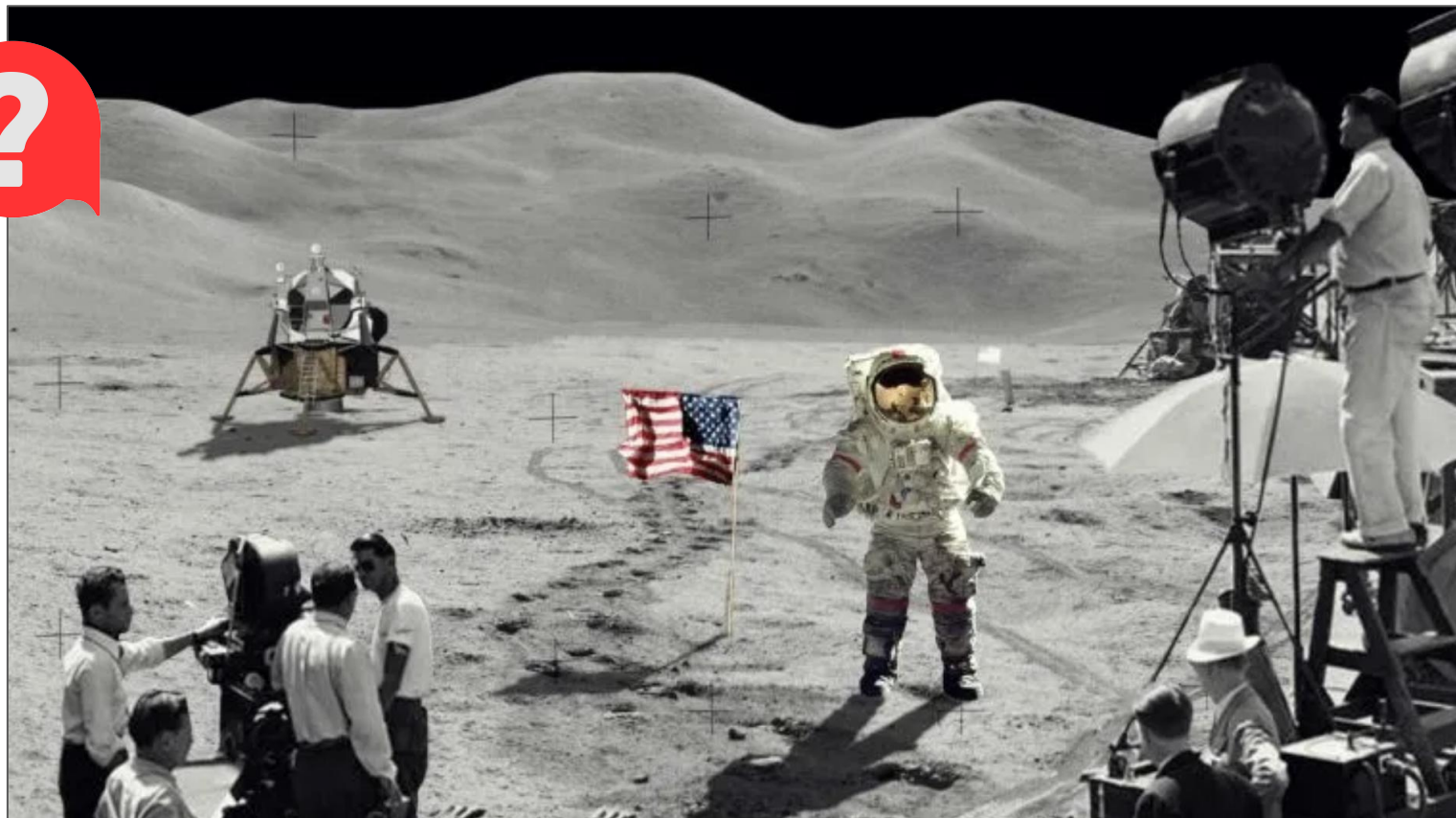
WALT DISNEY >

Walt Disney is frozen: the origin of a lie that convinced half the world

When Mickey Mouse's father died, a rumor arose, the origin of which had much to do with the behavior of his family.

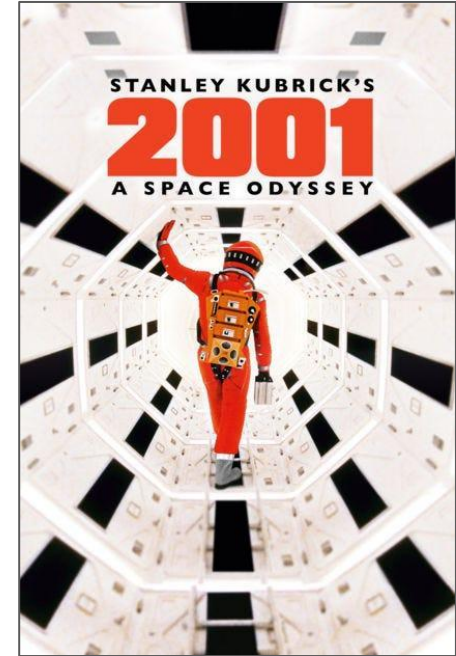


<https://bit.ly/3Tnbhvr>





**HAVE WE REALLY BEEN TO THE
MOON, OR IS IT ALL STAGED...?**





Participate in the 2025 international science photo competition!

🌐 47 languages

Contents

(Top)

Origins

- › [Claimed motives of the United States and NASA](#)
- › [Hoax claims and rebuttals](#)
- › [Third-party evidence of Moon landings](#)
- › [Public opinion](#)
- › [See also](#)
- › [Notes](#)
- › [Citations](#)
- › [References](#)
- › [Further reading](#)
- › [External links](#)

Article Talk

From Wikipedia, the free encyclopedia

"Moon hoax" redirects here; not to be confused with [Great Moon Hoax](#).

Conspiracy theories claim that some or all elements of the **Apollo program** and the associated **Moon landings** were **hoaxes** staged by **NASA**, possibly with the aid of other organizations.

The most notable claim of these conspiracy theories is that the **six crewed landings (1969–1972)** were faked and that **twelve Apollo astronauts** did not actually land on the **Moon**. Various groups and individuals have made claims since the mid-1970s that NASA and others knowingly misled the public into believing the landings happened, by manufacturing, tampering with, or destroying evidence including photos, **telemetry** tapes, radio and TV transmissions, and **Moon rock** samples.



“These are unfounded claims that have no scientific basis. In 2000, the Lunar Reconnaissance Orbiter, a spacecraft orbiting the Moon, took high-resolution photographs of the Apollo mission landing sites.”

demonstrably false.¹⁰ Opinion polls taken in various locations between 1994 and 2009 have shown that between 6% and 20% of Americans, 25% of Britons, and 28% of Russians surveyed believe that the crewed landings were faked. Even as late as 2001, the Fox

mockup.



<https://bit.ly/4nLDev0>







ROYALTY

The conspiracy theories that continue to surround the death of Diana, Princess of Wales

On August 31, 1997, the sudden death of Princess Diana shocked the world. But even today, 26 years later, theories still circulate that attempt to challenge what we know about the tragic accident.



<https://bit.ly/4lxu6YJ>



The screenshot shows the Wikipedia article titled "Conspiracy theories about the death of Diana, Princess of Wales". The article text is partially visible, discussing various hypotheses that emerged from 1998 onwards concerning the causes of the death of Diana Spencer. A blue text box is overlaid on the article content.

After the investigations, a verdict was issued:
"The deaths were caused or contributed to by the fact that the deceased were not wearing seat belts and by the fact that the Mercedes crashed into the pillar in the Alma Tunnel."



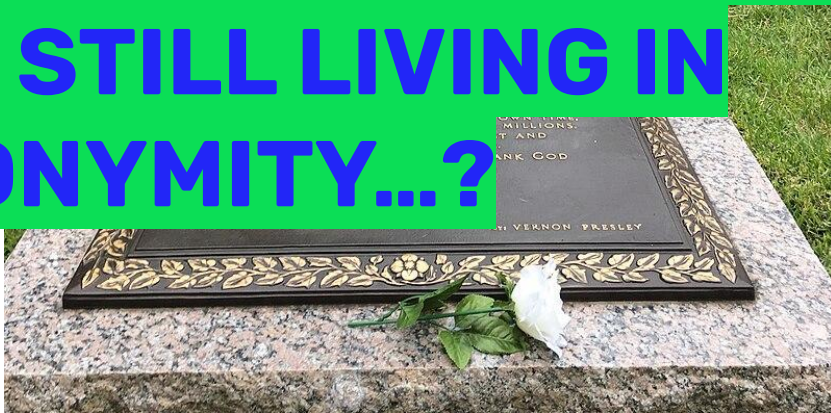
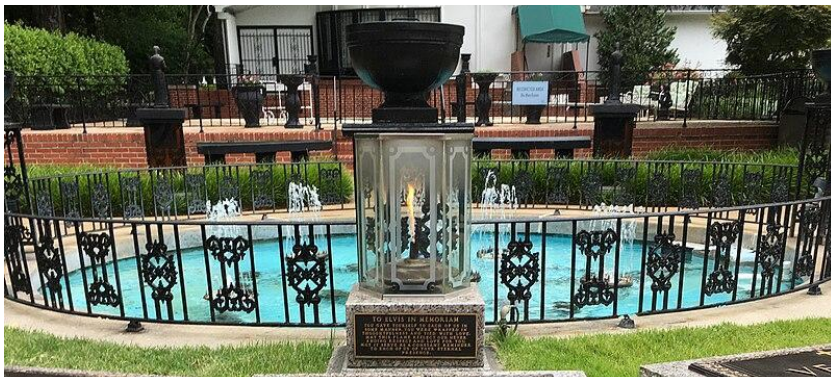
<https://bit.ly/4kwD9Zm>





Level
Up

**IS ELVIS PRESLEY REALLY DEAD
OR IS HE STILL LIVING IN
ANONYMITY...?**





New wave of Elvis sightings! (1991)



Telephone poll on TV: Is Elvis alive? (1992)

Elvis Sightings

12 Languages

Article Discussion

Read Edit View history Tools

Elvis sightings are reported sightings of the American singer [Elvis Presley](#) after his death in 1977. The [conspiracy theory](#) that Elvis did not die and instead went into hiding has been popularized by several authors.

Notable sighting reports [edit]

The earliest known alleged sighting of Elvis was at [Memphis International Airport](#), where a man resembling Elvis gave the name "John Burrows," the same name Elvis used when booking hotels.² A series of alleged sightings took place in [Kalamazoo](#), [Michigan](#), in the late 1980s. Such reports met with public ridicule and became fodder for humor publications such as the [Weekly World News](#).³ In [California](#), many people believed they saw Elvis at the [Legoland California](#) theme park shortly after its opening in 1999. It was later revealed that [Elvis impersonators](#) were hired as an attraction to commemorate Presley.⁴]

In late 1988, [LS Records](#) released the song " [Spelling on the Stone](#) ," sung by an unknown vocalist purporting to be Presley. The song's narrative suggested that Presley had not actually died. Airplay on [country](#) music radio stations led to numerous callers reporting sightings of the singer after hearing the song, while program directors at those stations debated whether the vocal track was actually Presley's.⁵]



Elvis before a meeting with [Richard Nixon](#) in 1970, White House photograph by photographer Ollie Atkins.¹]



<https://bit.ly/4kKVnXb>

HUMANS ARE RATIONAL BEINGS, BUT...



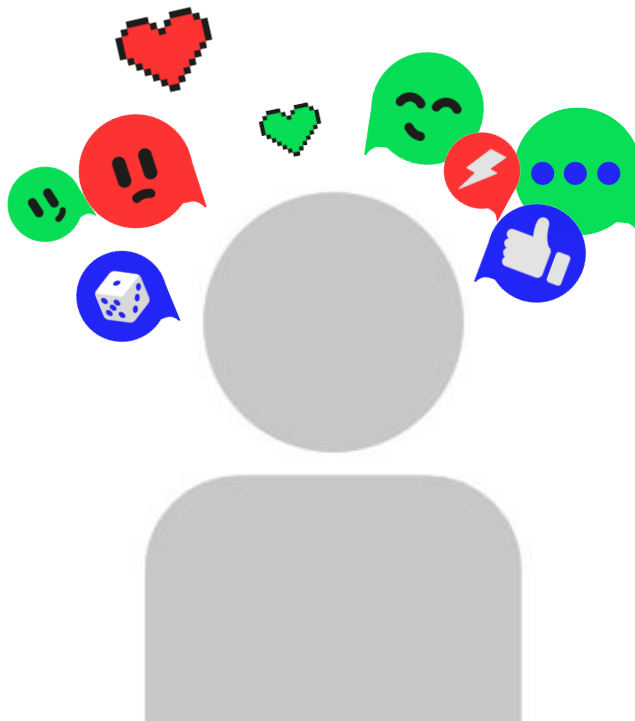
... WE ARE NOT AS RATIONAL AS WE THINK

Our decisions and actions are often influenced by factors that are not purely rational, such as emotions, intuitions, and cognitive biases.



BIASES

Level
Up





BIASES



Level
Up

We all have biases.

They are mental shortcuts that help us make decisions faster, but they can lead to distorted interpretations of reality.



FOR EXAMPLE:

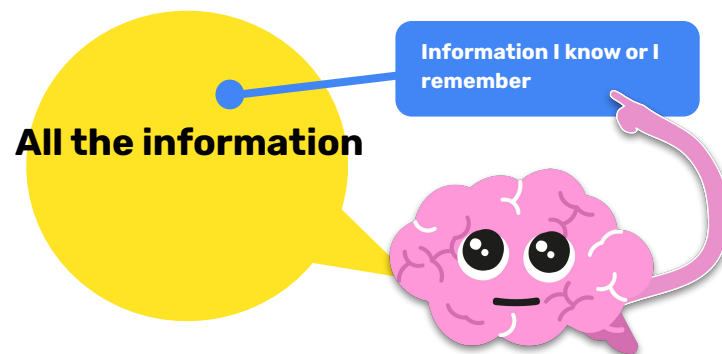


AVAILABILITY BIAS



Level
Up

The more something is repeated to us, the more easily we believe it.



FOR EXAMPLE:



AVAILABILITY BIAS



Level
Up

The more something is repeated to us, the more easily we believe it.



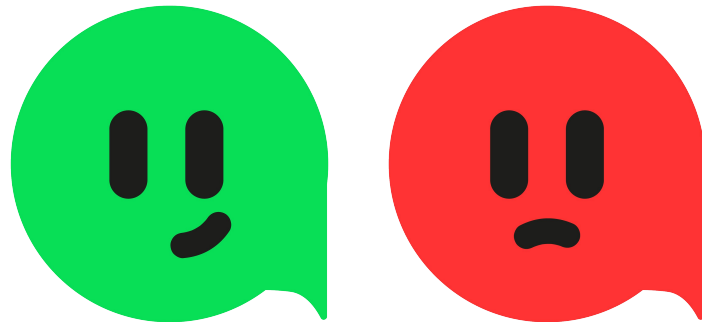
We can see how biases work in areas such as:

POLITICS where “we will support our own” regardless of objective facts”.

ADVERTISING and our purchasing decisions, where we often experience a false sense of choice and decision-making when someone has been guiding us step by step toward a certain behavior.



Conspiracy theories are based on these elements that affect our emotions.





LOGICAL FALLACIES



Level
Up





LOGICAL FALLACIES



Logical fallacies are errors in reasoning that
'attempt to prove' something false.



LOGICAL FALLACIES



Level
Up

Cherry Picking (fallacy of incomplete evidence). It is a tactic that consists of selecting and showing only the arguments or data that reinforce our ideas and ignoring the rest.



FOR EXAMPLE:



CONFIRMATION BIAS

The tendency to believe information that confirms our preexisting hypotheses or beliefs.



Level
Up



FOR EXAMPLE:

Level
Up

GROUP OR BANDWAGON? BIAS

Tendency to believe more in what our family or close circle says or does than in what outsiders say.





FOR EXAMPLE:

BLIND SPOT BIAS



Level
Up

Tendency to believe that since I perfectly understand what biases are, their types, and so on, they don't affect me, and that it's "everyone else" who falls for disinformation.

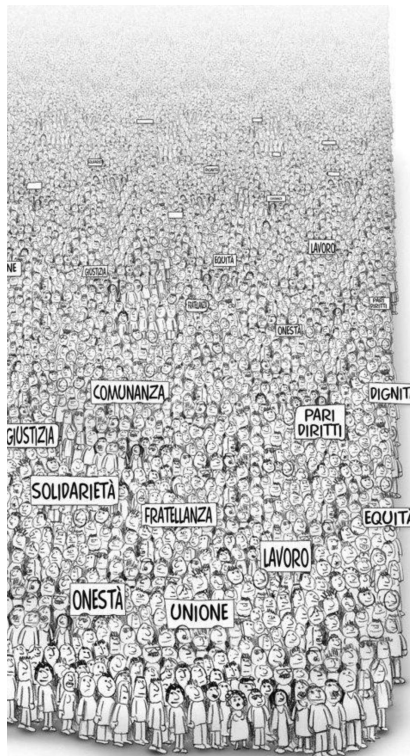
Yes, they do affect you.



CHERRY PICKING

Also called the 'fallacy of incomplete evidence'.

It consists of selecting and showing only arguments or data that reinforce our ideas and ignoring the rest.



ELEMENTS THAT CHARACTERIZE A CONSPIRACY THEORY:

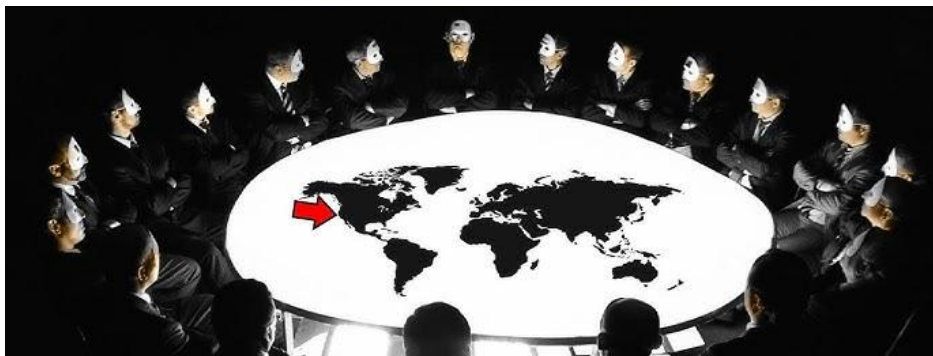
1. Secrecy and hidden control.
2. Distrust of authorities.
3. Simple explanations for complex events.
4. Lack of solid evidence, exploitation of cognitive biases or logical fallacies.
5. Confirmation cycle.

ELEMENTS THAT CHARACTERIZE A CONSPIRACY THEORY:



1 - Secrecy and hidden control:

These elements imply the existence of a group or entity with power and resources that acts covertly to influence or manipulate events in its favor, often to the detriment of others.



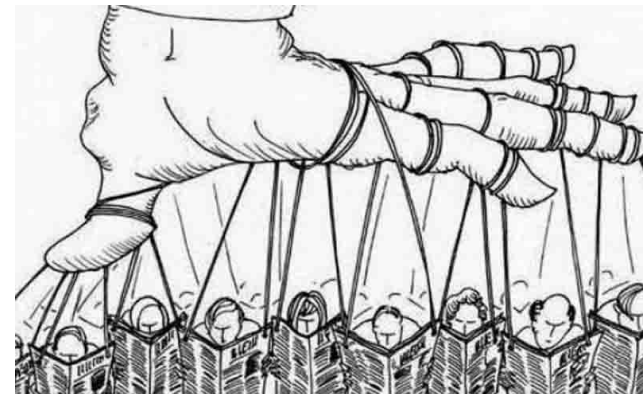
ELEMENTS THAT CHARACTERIZE A CONSPIRACY THEORY:



2 - Distrust of authorities.

This secret elite group not only hides information but also exerts considerable control over reality, manipulating events, institutions, or even public opinion.

This control can manifest in various ways, such as manipulation of the media, infiltration of governments, or influence over economic decisions



“Authorities lie to us by default”.

ELEMENTS THAT CHARACTERIZE A CONSPIRACY THEORY:



3 - Simple explanations for complex events.

Conspiracy theories offer simplified explanations for complex events, often attributing them to hidden forces or powerful groups.

These theories can arise from the need to make sense of confusing situations, **creating a sense of community** and reducing anxiety, **even though they lack any scientific or logical evidence.**



ELEMENTS THAT CHARACTERIZE A CONSPIRACY THEORY:

3 - Simple explanations for complex events.

A conspiracy theory **will never provide clear proof or evidence for its claim for a simple reason: none exists.**

Instead, it will entangle us in all kinds of argumentative tricks (or **fallacies**) and exploit the weaknesses of our brain (**biases**) to try to convince us of its message.

But there will never be any evidence.



ELEMENTS THAT CHARACTERIZE A CONSPIRACY THEORY:



4 - Confirmation cycle

Searching for and **selectively favoring information that confirms preexisting beliefs, while ignoring or rejecting evidence that contradicts them.** This reinforces belief in the conspiracy theory, even if it has no basis.

This cycle strengthens the belief in the theory, making it difficult to question.

The conspiracy theory becomes a self-confirmed truth, independent of objective reality.



SOME CONSPIRACY THEORIES AND THE ELEMENTS THAT “SUPPORT” THEM

Level
Up



1. The Earth is flat
2. Vaccines are harmful and cause autism.
3. Airplanes spray us with chemicals.



**"THE EARTH
IS FLAT"**



"THE EARTH IS FLAT"

ARGUMENTS:

"The horizon always looks flat no matter where you look from".

"Antarctica is a wall of ice that surrounds the entire Earth".

"If the Earth were moving, flight times would vary because planes would travel with or against the Earth's rotation".

"If the Earth were spherical, we would be able to see both sides of the Moon".





"THE EARTH IS FLAT"

ELEMENTS:

- Simple explanations for complex events.
- Lack of solid evidence, exploitation of cognitive biases or logical fallacies.
- Sense of belonging and exclusivity:
"I know the truth. You don't".



**"VACCINES ARE
HARMFUL AND
CAUSE AUTISM"**



"VACCINES ARE HARMFUL AND CAUSE AUTISM"

Level
Up

ARGUMENTS:

"I know someone who..."

"There is an important scientific study that supports it".

"Vaccines contain harmful and toxic ingredients such as mercury or aluminum".

"Vaccines cause the very disease they are meant to prevent".





"VACCINES ARE HARMFUL AND CAUSE AUTISM"

Level
Up

ELEMENTS:

- Distrust of authorities.
- Simple explanations for complex events.
- Lack of solid evidence.
- Confirmation cycle.





**"AIRPLANES
SPRAY US WITH
CHEMICALS"**



"AIRPLANES SPRAY US WITH CHEMICALS"

Level
Up

ARGUMENTS:

"You can see it with your own eyes".

*"Years ago this didn't exist.
The sky was blue without white lines".*

"They do it to control the population".

*"They poison us for the benefit
of pharmaceutical companies".*





"AIRPLANES SPRAY US WITH CHEMICALS"

Level
Up

ELEMENTS:

- Distrust of authorities.
- Simple explanations for complex events.
- Lack of solid evidence, exploitation of cognitive biases or logical fallacies.
- Confirmation cycle.

CONCLUSIONS

Level
Up

- Lies are more entertaining and interesting than the truth.
- These beliefs and groups have existed forever.
- We know the mechanisms by which they operate.
- Anyone can end up believing in something like this.
- These theories can be difficult to fight (they feed on emotion, not reason).



Level Up