

# Level Up

## Activity

# Do you know how to detect AI?



**ALL CONTENTS ARE  
GENERATED WITH  
ARTIFICIAL INTELLIGENCE**











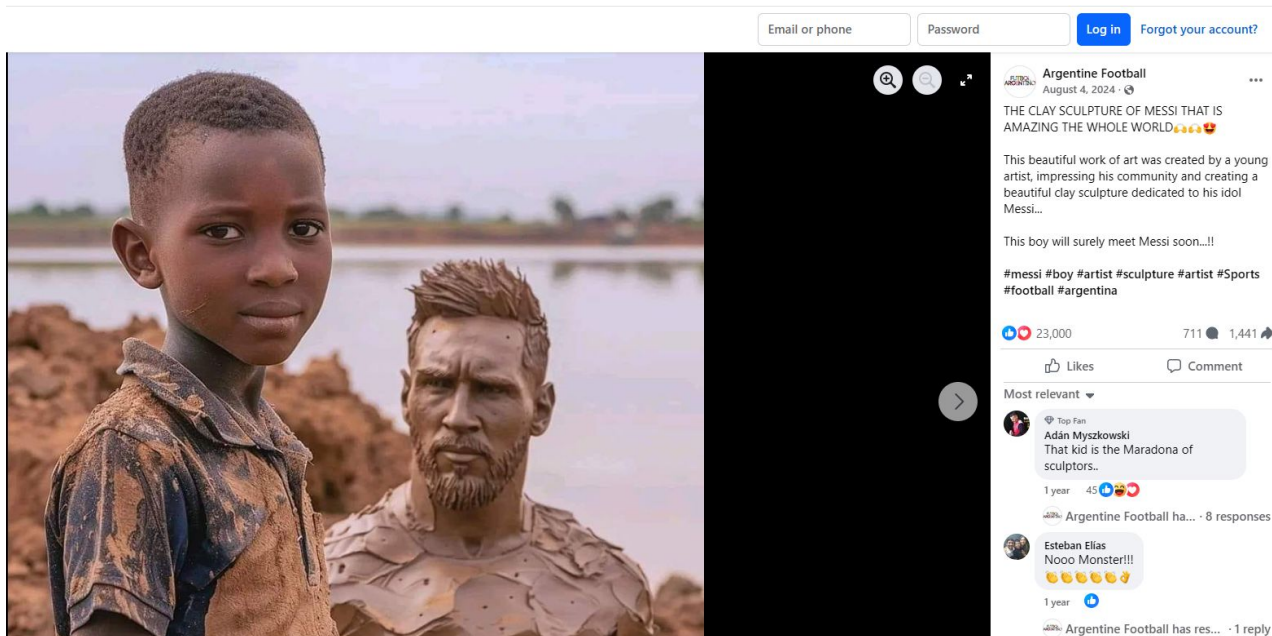
Level  
Up





- **Images tend to reflect aesthetic and occupational stereotypes about Latinos, portraying men in manual labor or construction jobs and women in roles related to cleaning or the service sector.**
- **Some experts indicate that AI image generators can perpetuate harmful stereotypes, influencing how people perceive their roles and limiting what they consider possible in society.**







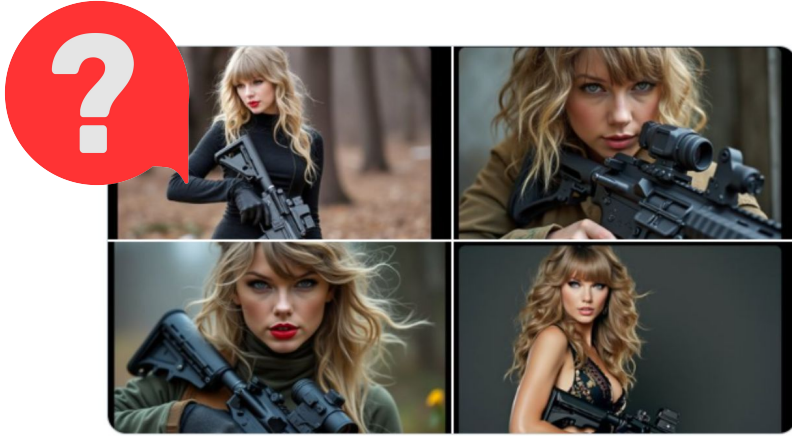
- **On Facebook, there are many images created with artificial intelligence that usually show children, artworks, houses, or images of Jesus. A study states that the social network recommends this content to users.**
- **The pages that post them aim to attract users' attention to increase engagement. This helps them generate income by monetizing the content or redirecting to websites full of ads or fake products.**





- **Elon Musk uses images created with X's AI (Grok) to label Kamala Harris as a communist, put the Brazilian judge who banned his social network behind bars, and contribute to disinformation campaigns.**
- **Experts and studies say that when a public figure like Musk (with 198 million followers on X) does this, it has a huge amplifying effect and legitimizes the use of AI to promote hate speech.**





- **Images and deepfakes of the singer have been circulated showing sexual content, carrying weapons, or attacking the Twin Towers.**
- **The singer is one of the most influential people in the world, and the use of her image has an impact, for example, in mobilizing thousands of citizens to go vote.**



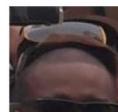




Nunca veréis a Obama en los barrios



22:19 · 14 may 23 · 62,3K Visualizaciones



Level  
Up

# Level Up